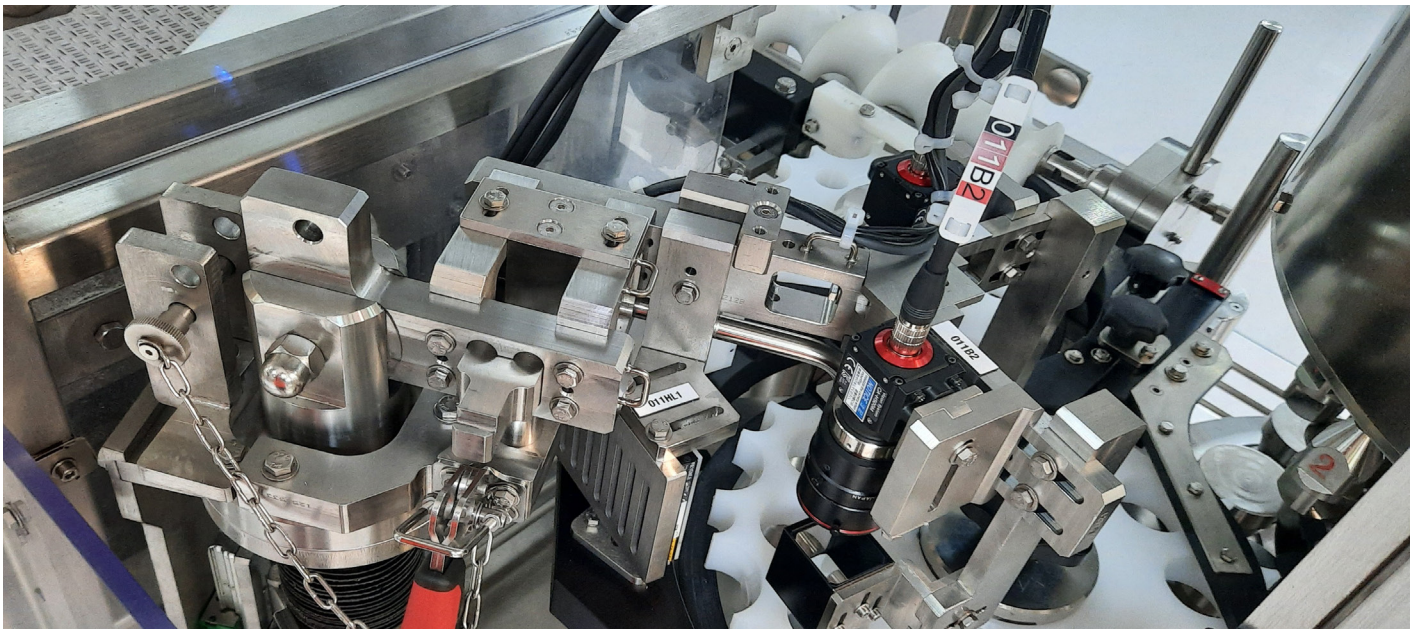




B&C

 BOTTLING
& CAPPING

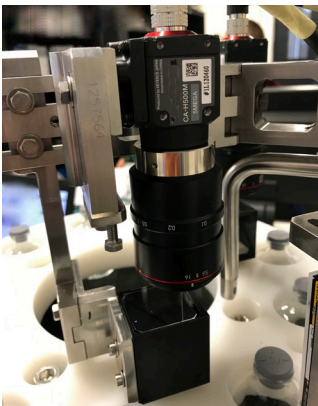
Z-INSPECT BOTTLE AND CAP CAMERA INSPECTION



Solution for pharmaceutical and personal care industry

Pharmaceutical, healthcare and personal care industries require very **strict quality control and monitoring of the capping**. This control may be needed after capping or during intermediary steps (before capping for closure).

The integration has not been completed during the machine installation? You may find convenient to **upgrade your capper** to avoid the purchase of a new equipment and the requalification of your whole line.



FEATURES AND BENEFITS

- High resolution single or multiple camera
- Designed for screw-on, roll-on sealing and snap-on cappers
- Suitable for speed up to 24,000 caps/hour
- Avoids production loss
- Traceability of the production batches
- Can be integrated in any manufacturer's (not only Zalkin) capper

Learn more about Zalkin at www.ZalkinCapping.com and more about ProMach at ProMachBuilt.com

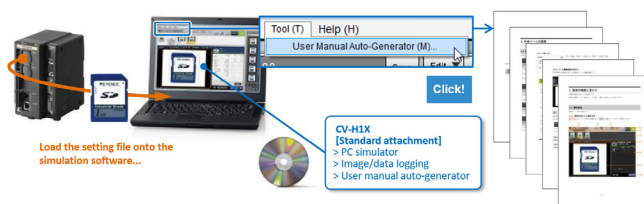
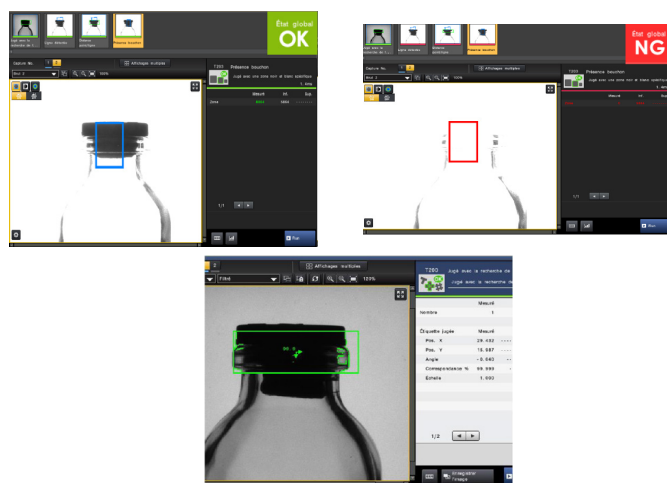
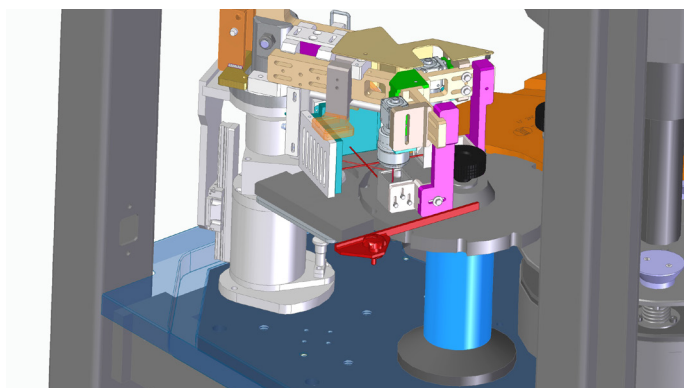
Z-INSPECT BOTTLE AND CAP CAMERA INSPECTION

TYPICAL PRODUCT SPECIFICATIONS

Camera	High speed, environmental resistant
Camera weight	Aprox. 75 g (lens not included)
Camera tightness	IP64

Ambient operating temperature	0 to 50°C
Ambient operating humidity	35% to 85% RH

- Integration into existing equipment of a vision system to detect defective caps and bottles after capping.
- Vision system (camera) with HMI and control box
- Rejection of the faulty bottles, without stopping the line.
- Defaults controlled
 - missing cap
 - cap height
 - cap shape,...
- Machine stops only after X consecutive defects
- Backlight
- Easy configuration, use and maintenance with interactive menus
- Documented test protocol provided



©2022 ProMach Inc. ProMach reserves the right to change or discontinue specifications and designs shown in this brochure without notice or recourse
 FSER_0007_01_COMM_ENG_Z_Inspect_Camera inspection

PHONE
 +33 2 32 47 39 73

EMAIL
conversions@zalkin.fr

WEB
ZalkinCapping.com

Zalkin
 Route André Zalkin
 27390 Montreuil L'Argillé - France